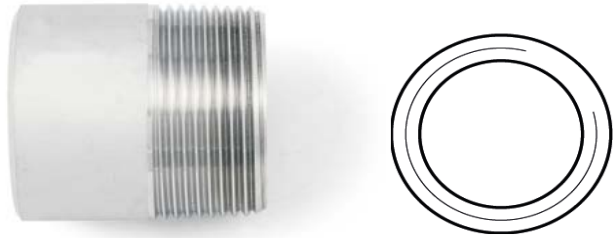


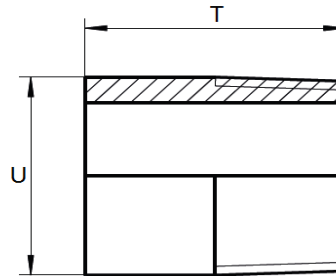
ART. 2982A

Tronchetti a saldare, aisi 316 / A4

Welding nipples, aisi 316 / A4



Ricavati da tubi saldati
Made from pipes welded



Filettatura: conforme a EN 10226-1 (EX ISO 7-1)
(filetto maschio conico, filetto femmina cilindrico)

Conicità 1:16 sul diametro

Angolo del filetto 55°

Pressione massima d'esercizio 150 lbs (Libbre) = 10,34 BAR PN10

Thread: according to EN 10226-1 (EX ISO 7-1)

(conical male thread, cylindric female thread)

Taper 1:16 on diameter

Angle of threads 55°

Maximum operating pressure 150 lbs = 10,34 Bar PN 10



Codice Articolo Item Number	M size	DN/ID	U (mm)	T (mm)	Box	Master carton
2982-4-1/8A	1/8"	6	10,2	30	25	/
2982-4-1/4A	1/4"	8	13,5	30	20	1000
2982-4-3/8A	3/8"	10	17,2	30	25	600
2982-4-1/2A	1/2"	15	21,3	35	10	400
2982-4-3/4A	3/4"	20	26,9	40	25	200
2982-4-1A	1"	25	33,7	40	5	120
2982-4-1-1/4A	1"1/4	32	42,4	50	5	60
2982-4-1-1/2A	1"1/2	40	48,3	50	5	60
2982-4-2A	2"	50	60,3	50	1	36
2982-4-2-1/2A	2"1/2	65	76,1	60	1	18
2982-4-3A	3"	80	88,9	70	1	12